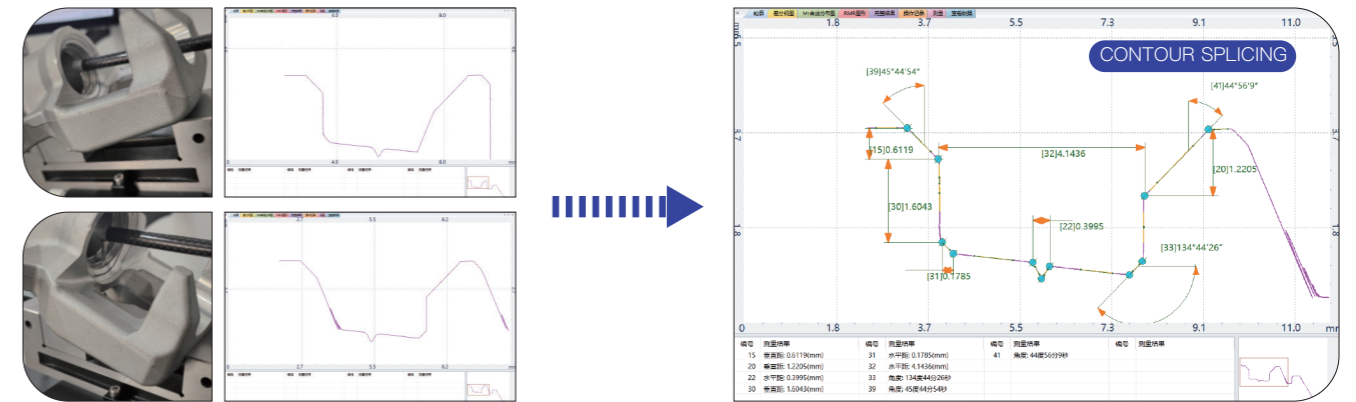
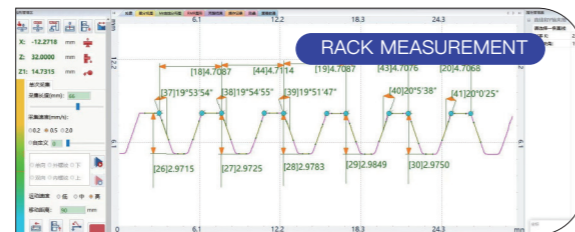
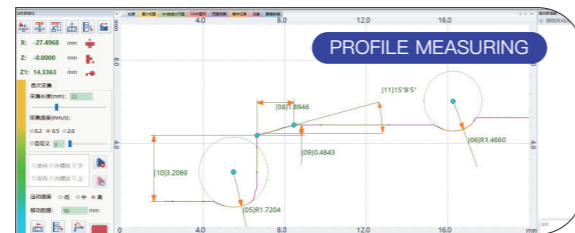
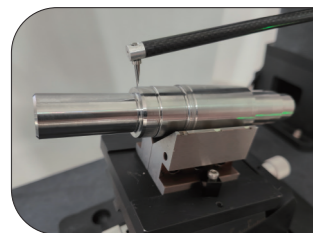


MMD SERIES PROFILOMETER

It can measure the contour of various precision mechanical parts, support automatic measurement, and automatic dimension



FUNCTION

Point: point, midpoint, intersection, highest point, lowest point

Line: straight line, tangent line, vertical line, parallel line, bisector

Angle processing: coordinate angle, line angle

Arc processing: arc radius, center distance, distance from center to line, distance from intersection point to center, local circle, tangent circle

Others: groove depth, groove edge distance, groove center distance, horizontal distance, groove shape deviation, etc

FORM TOLERANCE

Straightness, convexity and profile

AUXILIARY FUNCTIONS

Including auxiliary point, auxiliary line and auxiliary circle

TECHNICAL PARAMETER

| Item | | Model | | |
|-----------------|------------------------------|--|---|---|
| | | MMD-100 | MMD-150 | MMD-200 |
| measuring range | X-axis horizontal guide rail | 100mm | 150mm | 200mm |
| | Z1 axis sensor | 40mm | 50mm | 60mm |
| | Z-axis column | 450mm | 500mm | 500mm |
| Profile | Linear precision X | $\pm (1+0.05L) \mu\text{m} \times$ | | |
| | Linear precision Z1 | $\pm (1+0.02H) \mu\text{m} \times$ | | |
| | angle | $\leq \pm 1'$ | | |
| | arc | $\leq \pm (0.8+R/12) \mu\text{m}$ R 0.5 mm~10mm \times | | |
| | Straightness | 0.6 $\mu\text{m}/100\text{mm}$ | 0.6 $\mu\text{m}/100\text{mm}$ 1.0/150mm | 0.6 $\mu\text{m}/100\text{mm}$ 1.2/200mm |

The parameters in the table above are default configurations. \times L: Measuring distance, H: Gauge altitude, R: Radius of curvature
If other configurations are required, they can be selected according to the order number